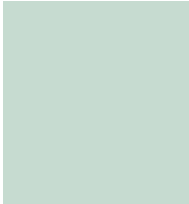




**NORTH STAR MUSEUM**  
OF BOY SCOUTING & GIRL SCOUTING



**2013  
Annual  
Report**



2640 East 7th Street  
North St. Paul, MN 55109  
Phone: 651-748-2880  
[www.nssm.org](http://www.nssm.org)



## Introduction to North Star Museum

Operated by North Star Scouting Memorabilia, Inc. (NSSM), the North Star Museum of Boy Scouting and Girl Scouting is the only museum in the upper Midwest dedicated to preserving the history, traditions and cultural impact of Boy Scouts of America (BSA) and Girl Scouts of the USA (GSUSA).

An independent non-profit organization with 501 (c)(3) status, North Star Museum was founded in 1976 by veteran scouters who felt compelled to “collect, preserve, share, and interpret the history and significance of Boy Scouting and Girl Scouting in the upper Midwest.”

In its 38-year history, North Star Museum has gathered more than 150,000 artifacts, photographs, publications, gar-

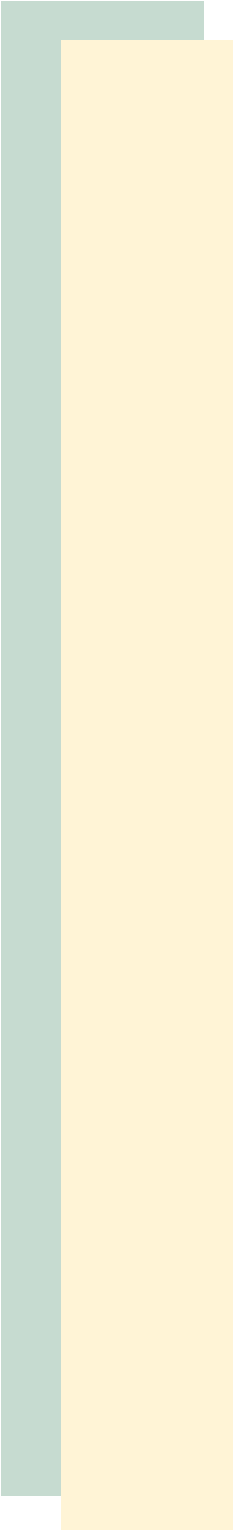
ments, films, and sound recordings. For over two decades, the museum’s growing collection had no permanent home. A generous gift from the 3M Company in 1999 provided a clean and dry storage location for the collection. In 2005, North Star Museum moved into the former Ramsey County Library building in the heart of downtown North St. Paul.

The North Star Museum Board of Directors hired full-time Executive Director Claudia Nicholson in 2005 to oversee the management of the museum,

collection and resources. Mike Lund joined the staff as part-time maintenance support in 2007. Shirley De la Torre became the full-time Director of Institutional Advancement in 2013. The museum also employs a part-time Administrative Assistant.

2013 saw unprecedented growth of outreach, programming and staff at North Star Museum. These additional opportunities expand North Star Museum’s reputation as a community resource for study, exploration and fun!





October 1, 2014

Dear Members:

What a year 2013 was! While the purpose of a letter such as this is ordinarily to bring you up-to-date on events that have transpired in the organization since the beginning of this new year, we thought a little more big-picture reflection on the year that was 2013 is in order.

While it was difficult to see it while we were in the midst, it must be understood that 2013 was a year of transition and transformation for the Museum. In late 2012, we were faced with the prospect of poking along for another three decades, in the way that we had been since Claudia arrived in 2005. Her plate was full to overflowing, and instituting new programs, properly cultivating both members and donors, working with the collection, and even changing most exhibits was simply not possible.

A management study by friend-of-the-museum Jim Frost challenged us to consider this path—and he concluded that without hiring new staff to take on some of the things that could not get done with one office employee and a building maintenance man, we could not grow and sustain ourselves.

In a dramatic board meeting near the end of 2012, we opted to grow, and made plans to fund that growth. In January 2013, we were surprised, and gratified, to learn that we were the recipient of a \$90,000 grant to cover the costs of hiring an additional full-time and an additional part-time employee.

The work you see in this report, as well as the work that has taken place since, is a direct result of that dramatic board meeting. In March, we welcomed Katy Epler as our Administrative Assistant, and in June, we brought on Shirley De la Torre as our new Director of

Institutional Advancement. Both women dove into their work, streamlining procedures, raising our public profile, learning more about our audiences and how to reach them, and catching up on administrative tasks that had languished before. Programs like our “Overnights at the Museum” and “Club Bruce” joined our roster, in addition to the programs that people have come to expect from us, like the annual Skunk Reunion, the popular Merit Badge Workshops, and “S’mores with Juliette”. There was a new energy, and a new commitment to growth and change.

We are not at the end of our transition, and in the coming years, we hope you will take note of our new energy, new programs, building improvements, and a lot more about the precious collections that we hold in trust for you and your descendants. Please come visit, if it has been a while since you were here, and please encourage your friends to do likewise.

With your continued help, we can do all of this, and more!

Sincerely,



Ron Phillippe  
Board Chair



Claudia J. Nicholson  
Executive Director

## Founders Hall

The fourth annual Davis and Randall Founders Hall recognition event on November 9, 2013, celebrated six inductees. Over 75 friends, family and guests gathered at the museum to honor the extraordinary contributions of special volunteers and supporters who have played a significant role in the world of Girl Scouting and Boy Scouting.

### *Founders*

Founders are visionary leaders who played a substantial role in the creation, innovation, or direction of Girl Scouting, Boy Scouting or North Star Museum over a significant number of years. Early Boy Scout Pioneer Charles L. Sommers was presented as a Founder at the 2013 event.



### *Builders*

Builders have made a meaningful impact on Boy Scouting, Girl Scouting or North Star Museum through their financial support and gifts of influence. A Builder is a transformative leader, persuasive and insightful in their leadership – one who helps make the Founders’ vision a reality.

Three Builders were recognized in 2013: Sandra L. “Sandy” Craighead, former Girl Scout Council President and North Star Museum Board member, Kay Fredericks, Trend Enterprises CEO and past Indianhead Council President, and Charlton “Chuck” Dietz, retired 3M Vice President and former Indianhead Council President.



### *Trailblazers*

Trailblazers are dedicated leaders who provided exceptional direct volunteer leadership to Scouts at the grass roots level, combining their own ideas and creativity with those brought forth by Founders and Builders through youth mentoring.

Girl Scout volunteer Ruth Ackerman Davis and Boy Scout volunteer Robert “Bob” Plante were inducted as Trailblazers in 2013.



## Skunk Reunion

Any North Star Museum member with fifteen years or more as an adult volunteer in the Boy Scouts or Girl Scouts is automatically a Skunk.

On June 1, 2013, 53 Skunks gathered at the Swanson Lodge of the Fred C. Andersen Scout Camp to honor two of their own: Joan Robbins and Charlie Opp.

Joan Robbins' accomplishments are many and varied. She has served in a troop, as unit commissioner and as district roundtable staff. Recognition of her devotion to Scouting includes the Silver Beaver award. She has volunteered countless hours for the North Star Museum of Boy

Scouting and Girl Scouting, coordinating our traveling displays, assisting with the transfer of Dick Carroll's estate to the 3M storage facility and preparing meals for eight of the last nine Skunk Reunions, including this one!

Charlie Opp has been a registered Scouter for almost 30 years. He has served at the pack, troop, district and council levels, receiving much recognition, including the Silver Beaver Award. Charlie is currently a Venturing crew associate advisor and has been a key leader in a special needs troop for fifteen years. Charlie served on the North Star Museum of Boy Scouting and Girl Scouting Board of Directors and was Board Chair.

Author Dave Kenney spoke to the Skunk Reunion attendees about his book on the history of the Fred C. Andersen Scout Camp. Kenney's presentation ended with a tribute to retiring Camp Ranger Art Marty, who thanked the crowd for a great career.



After the Skunk of the Year presentation, many more Skunks were thanked for their ongoing volunteer work with the museum. Many projects would have gone unfinished without their dedication and gift of time.



Skunks are always welcome to volunteer on a project at the museum. Contact Claudia Nicholson or Jim Rupert if you are interested.





## Pause That Refreshes

One of North Star Museum's extremely successful programs is the Pause That Refreshes. On the 12th of each month (when that day falls on a weekday) at noon, North Star Museum opens its doors to friends and guests alike, who are treated to an interesting speaker and a light lunch.

2013 Pause events featured the following speakers: John Andrews, North Star Council Executive; Phyllis Willerscheidt and Karen Klose, former Girl Scouts; Tish Bolger, Board Chair of the American Camp Association and COO of Girl Scouts of the

Minnesota and Wisconsin River Valleys; Dr. Dave Walsh, child development expert; Anthony Thomas, the nation's two millionth Eagle



Dr. David Walsh

Scout; Travis Suttan, Many Point Scout Camp Director; and Naval Commander and Scout Leader Gregory Schlichting, who spoke about "Being Prepared".

## Overnights at the Museum

In response to requests by troops to camp overnight at North Star Museum of Boy Scouting and Girl Scouting, a trial run of "Overnights at the Museum" rolled out for two weekends in November 2013.

Beginning at 7pm on Saturday evenings, campers were treated to activities, crafts, a bonfire, snacks, singing and The Golden Eaglet movie (a 1918 film made by Juliette Low to promote Girl Scouts), before rolling out sleeping bags to sleep in the museum gallery to the sounds of crickets and a crackling fire.

Sunday mornings added to the fun with

a pancake breakfast and final troop activity before the 10 a.m. departure.



Due to the hard work and dedication of North Star Museum's Director of Institutional Development Shirley De La Torre, and Volunteer Nell Nere, each troop is treated to a tailor-made experience based on specific requested badge work. One troop brought their own cars to race on the Museum's Pinewood Derby track.

Because of the popularity of Overnight at the Museum events, several weekends throughout 2014 have been planned on a first-come, first-served basis.





## Annual Meeting

On Saturday, October 12, 2013, members, friends and neighbors were invited to attend North Star Museum's Annual Meeting and first-ever Open House event.

Guests had the chance to visit vendor booths, bid on silent auction items, check out the completed Guthmann Gallery Lighting, the new ultra-violet protective window murals, take a tour of the museum, see Pinewood Derby demonstrations, enjoy a hot dog or s'mores from a real bonfire, and register for door prizes.

During the Annual Meeting portion of the day, Executive Director Claudia Nicholson shared the State of the Museum update,



focusing on members' input for the five-year long-range plan. Board Chair Ron Phillippo thanked all those who helped North Star Museum forward in 2012. Dr. Tom Alt and Bruce Richard were elected to the Board of Directors, and members approved amendments to the Articles of Incorporation and By-laws. Attendees also enjoyed fellowship and brunch.

## Club Bruce Launched

As a special announcement at the Annual Meeting and Open House events, North Star Museum of Boy Scouting and Girl Scouting staff launched a brand-new youth membership option called "Club Bruce", after Bruce the Moose, the museum's mascot. For \$35, Club Bruce

members (youth up to age 11) receive Bruce's Adventure Pack. The pack includes an array of benefits including a backpack, water bottle, combination compass/flashlight/whistle, invitations to Club Bruce events, the quarterly Club Bruce newsletter and discounts to Overnights at the Museum and Club Bruce birthday parties.



A portion of the cost of each Club Bruce membership is donated to the Minnesota Department of Natural Resources Moose Research Project which supports the preservation of the moose population in Minnesota.

## Projects

With the addition of two new staff members to North Star Museum in 2013, the appearance of the Richard E. Carroll Workroom changed significantly. Facilities Manager, Mike Lund, along with some hard-working volunteers, made a trek to Golden Valley to bring back partitions, file cabinets, and chairs to create cubicles in the workroom area, which was donated by Northern Star Council.

North Star Museum was the beneficiary of a \$50,000 Arts and Cultural Heritage Legacy Grant in 2012. After receiving contractor bids for the project, which came in over budget, museum volunteers, led by Facilities Manager Mike Lund, did the demolition work. Additionally, money was saved when the museum recycled nearly a ton of old metal light fixtures. During construction, Mike Lund diligently

moved the museum exhibits to ensure their preservation and safety. The project was finished with the installation of decorative coverings on the large windows in the gallery. The coverings are imprinted with Boy Scout and Girl Scout images from the 1930s. In the end, the Guthmann Family Gallery lighting project is reducing the harmful ultraviolet light that hits artifacts and saving energy while still highlighting what visitors want to see at North Star Museum.

Due to a generous donation from the Minnesota Masonic Charities and the



Grand Lodge of Minnesota, North Star Museum was the recipient of a state-of-the-art Pinewood Derby track in 2013. With several vintage Pinewood Derby cars in our collection, the Pinewood Derby track is a great addition that will bring the past and present together in our gallery space. We are now looking for volunteers willing to be trained as pit crew. If you are interested in this position, contact the museum.

In addition to regular maintenance of the building and grounds, wooden siding on the exterior was replaced with steel board-and-batten style siding in late 2013, and the carpet in the Founders Hall was replaced.

## Visitation and Outreach

North Star Museum of Boy Scouting and Girl Scouting welcomed 2,599 visitors in 2013.

With increased staff and programs, the Museum is continuing to expand its outreach into the Girl Scout and Boy Scout and local communities.

Visitors to North Star Museum enjoyed regular events such as the Pause That Refreshes speaker series, the Founders Hall recognition event, S'mores with Juliette, and Super Merit Badge weeks in the summer. The latter event alone introduced over 135 boys to the Museum.



In addition, new programs like Overnights at the Museum, the Fall Open House and Milk and Cookies with Santa were all very popular.

Other visitors to the Museum in 2013 included the Northern Star Council Diversity Committee retreat, the Tomahawk Scout Reservation Staff Alumni Association's board meeting and holiday party, and the International Wolf Center's gathering. Over 30 current Boy Scout and Girl Scout events were held at the Museum in 2013 and several Eagle Scout Courts of Honor.



North Star Museum staff and volunteers hit the road in 2013, attending several events that expanded the museum's reach into the community. Among the outreach events were an internship fair at Century College, the University of Scouting, St. Cloud's Museum Ambassador program, a World War II event in Dakota County, Lakamaga Adult Education Conference, Minnesota Field Trip Expo, Washington and Ramsey County Fairs, and Executive Director Claudia Nicholson's trek to the American Alliance of Museums convention.

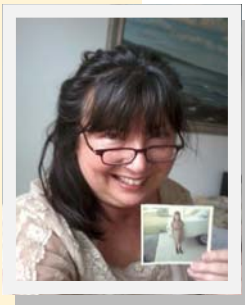
## People

### *Staff*

With over 35 years of experience working in history museums and archives, Executive Director Claudia Nicholson has lead North Star Museum of Boy Scouting and Girl Scouting for the past 9+ years, almost single-handedly. In 2007, Facilities Manager Mike Lund joined as a part-time employee after many years as a loyal and dedicated volunteer.

In 2013, North Star Museum of Boy Scouting and Girl Scouting doubled the number of paid staff with the addition of a part-time Administrative Assistant and Director of Institutional Advancement.

In June, 2013, Shirley De la Torre joined North Star Museum as the Director of Institutional Advancement. Shirley's responsibilities include working with marketing, messaging, donors, volunteers, programming and outreach. No stranger to Girl Scouting, Shirley was a Brownie in her youth, as well as a Boy Scout Explorer in a law enforcement post as a teen, and has created youth programs at North Star Museum which have been instant hits.



With a background rich in museum experience, Katy Epler began her duties as Administrative Assistant in March, 2013. Katy's responsibilities included working with the database, handling accounts payable and completing other clerical and administrative duties as assigned.



### *Interns*

2013 brought two summer interns to North Star Museum. Robin Allison from Jackson, Wyoming, studies at the University of Oklahoma and Katie Steffan from Oak Creek, Wisconsin, studies at the University of Wisconsin – Milwaukee. Both interns spent their time at the Case warehouse facility inventorying the collection, and brought order to a somewhat chaotic situation.



## Volunteers

North Star Museum of Boy Scouting and Girl Scouting could not exist without our wonderful volunteers.

From creating programs to leading sing-a-longs, from entering data and redesigning the Museum News to vacuuming, from cataloguing the collection to moving boxes, from serving on committees to raising funds, from making calls to shaking hands, from taking registrations to staffing booths, North Star Museum of Boy Scouting and Girl Scouting volunteers did not hesitate to lend a hand. With increased programming and outreach in 2013, North Star Museum volunteers stepped up to the plate and contributed hundreds of hours of hard work, collaboration and initiative to increase our reach into the community and invite new faces to the Museum.

Scouts who volunteered at North Star Museum tackled many and varied projects including yard work, cataloguing the collection, and inventorying paper records.

We appreciate ALL the people who volunteered in 2013 at North Star Museum. We apologize in advance if you volunteered and your name does not appear here. Please be sure to contact the museum so we can list you in next year's annual report.

### **2013 Volunteer Hours**

All=At least 2 hours  
\*= More than 25 hours  
\*\*=More than 50 hours  
\*\*\*=More than 100 hours

Terri Anderson\*\*  
Tim Barrett\*\*  
Paul Bartyzal\*  
Carlos Campos  
Chuck Clausen  
Judy Clausen\*\*  
Sandy Craighead  
Russ Edlund  
Becca Emmons\*\*\*

Carol Forrest\*\*\*  
Gary Gorman\*\*  
Howard Guthmann  
John Guthmann  
Hugh Gwin  
Barbara Herrmann  
Betty and Paul Joyce  
Kirsten Larsen\*\*\*  
Kurt Leichtle  
Deb Martin  
Gordon Meeker  
Robbi Moore  
Roy Nauertz  
Nell Nere  
Lorena Palm  
Robert Pettitt  
Ron Phillippo  
Stephanie Pommier  
John Raymond  
Joan Robbins\*\*  
Jim Rupert  
Bill Rust  
Marianne Salzberg  
Nora Slawik  
George Smith  
Jim Stevenson  
Tom Welna\*\*  
Dave Wettergren  
Kathryn White\*  
Tom Welna\*\*  
Kent York



## **Board of Directors**

### ***Officers***

Chair: Ron Phillippo  
Vice Chair: Lorena Palm  
Secretary: Vacant  
Treasurer: Jim Stevenson

### ***Board Members***

Sandy Craighead  
Howard Guthmann  
John H. Guthmann  
Hugh Gwin  
Barbara Corti Herrmann  
Kurt Leichtle  
Robbi Moore  
Stephanie Pommier  
William E. Rust  
Nora Slawik  
George Smith  
Thomas Welna  
David Wettergren  
Kent York

## **Committee Members**

### ***Collections Committee***

Mollie Spillman (Chair)  
Jay Biedny  
Betty Joyce  
Bob Pettitt  
Joan Henry  
Tim Jopek

### ***Development Committee***

Sandy Craighead  
Mike Galvin  
Gary Gorman  
Howard Guthmann  
Lorena Palm  
Ron Phillippo  
Jim Rupert  
John Schwietz  
Brad Thompson

### ***Exhibits Committee***

George Smith (Chair)  
Jack Johnson  
Kurt Leichtle  
Bob Pettitt

### ***Finance Committee***

Jim Stevenson (Chair)  
Howard Guthmann  
Lorena Palm

### ***Marketing and Public Relations Committee***

Kent York (Chair)  
Shirley De La Torre

### ***Membership Committee***

Nora Slawik (Co-Chair)  
Hugh Gwin (Co-Chair)  
Jim Rupert  
Bonna Scherer

### ***Merit Badge Workshops Committee***

John Guthmann (Chair)  
Carol Forrest  
Tim Jopek  
Claudia Nicholson

### ***Museum News Staff/Website***

Terri Anderson (Editor, Webmaster)  
Gary Gorman (Writer)  
John Guthmann (Writer/Editor)  
John Raymond (Layout Editor)  
Kathryn White (Editor)  
Shirley De La Torre  
Claudia Nicholson

### ***Program Committee***

Robbi Moore (Chair)  
Kurt Leichtle  
John Guthmann  
Nell Nere  
Brad Thompson

### ***Properties Committee***

Tom Welna (Chair)  
Bill Rust

### ***Volunteer Team Leader***

Gary Gorman



## Contributors

We are grateful to all of you whose contributions in 2013 helped us increase our staff & programming opportunities, preserve & share our collections, fund facilities, & continue to celebrate the history, ideals & adventures of boy Scouting & Girl Scouting in the upper Midwest.

The following organizations & individuals made financial contributions to North Star Museum in 2013:

### **\$10,000+**

Lee & Penny Anderson  
Bruce A. Richard  
Robert & Joyce Rosene

### **\$5,000-\$9,999**

Kay Fredericks & Richard Cisek  
Sandra & Donald Craighead  
Howard & Betsy Guthmann

Hardenbergh Foundation

### **\$1,000-\$4,999**

Terri L. Anderson  
Grand Lodge A.F. & A.M. of Minnesota  
John & Teresa Guthmann  
Barbara Corti Herrmann  
HRK Foundation  
F. Alexandra & Robert C. Klas  
Skip Krawczyk  
Minnesota Masonic Charities  
Charles & Margaret Opp  
Lorena A. Palm  
Ron & Betty Phillippo  
James H. Rupert  
Totanhan Nakaha Lodge, Order of the Arrow  
Thomas Welna

### **\$500-\$999**

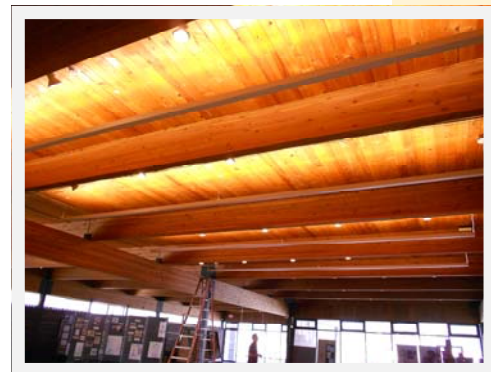
Anonymous  
Jim Beikler  
C. Edward & Cynthia Buchwald  
Mary Ann Corbey  
E. Eugene Engelbert\*  
Michael & Frances Galvin, Jr.  
Hugh H. Gwin  
Merrill M. Kuller\*

Kurt E. Leichtle  
Claudia J. Nicholson  
David Novy  
Jon Pederson  
The Salem Foundation, Inc.

### **\$100-\$499**

Anonymous  
Ferial Abraham  
Mike Aeling  
Daniel B. Ahlberg, MD  
John Andrews  
Thomas George Armstrong  
Paul Bartyzal  
Alan Bernick  
Donald Blacker  
Tisha M. Bolger  
Darrell Butterwick  
Jack & Martha Callaway  
John T. Capecchi  
Richard & Jean Clarke  
Chuck & Judy Clausen  
The Cooke Family  
Kenneth Crabb

Nancy Randall Dana  
Maxine Davis  
Scott & Mary Degel  
Lloyd Dewey  
Judith P. & Richard J. Diedrich  
Chuck Dietz  
Kenneth R. Edd  
Rae Katherine Eighmey  
John D. Elholm  
Bob & Louise Elliott  
Becca Emmons  
David & Shirley Fihn  
Roger A. Forman  
Michael B. Gerster  
Joseph W. Glenski  
Philip R. Goodrich  
Gary Gorman  
Ann M. Green  
Lloyd Greenway  
Dennis & Nancy Hebrink  
Susan Henry  
Jolene Herrmann  
William Hickey  
Loretta Himmelsbach  
Louis Hoffman  
Stanley S. Hubbard  
Judy Hunter  
Richard W. Jacobson







Jack K. Johnson  
 Peter A. Johnson  
 Ron Johnson  
 Richard C. Jonasson  
 Julie M. Joyce &  
     Kyle Falconbury  
 John H. Judd  
 Eileen M. Karl  
 Byron Kieser  
 Dan & Joann Knuth  
 Alexandra Lape  
 John Lape  
 James & Linda Lee  
 Bill Lenker  
 Dusty Mairs  
 Lawrence McGough  
 Padraic McGuire  
 Harry McNeely  
 Gordon F. Meeker  
 Richard L. Meyer  
 Lawrence E. Moser  
 Frederick J. Neher,  
     Jr.  
 Richard & Nancy  
     Nelson  
 Helen Nere  
 Marianne  
     Nicholson  
 Patrick Norris  
 Thomas Pahl  
 Sally & Tom  
     Patterson

Eugene Peterson  
 Stephanie Pommier  
 John Raymond  
 Joseph A. Reding  
 Virginia Reher  
 Fred & Peggy Riehm  
 Bonna Scherer  
 David Schmidtke  
 Rob Schultz  
 John Schwietz  
 Susan & Wayne  
     Shelton  
 Nora Slawik  
 George Smith  
 John Stafford  
 James Stevenson  
 The Sticha Family  
 Jeff Sulzbach  
 Robert F. Szczys, MD  
 John M. Teske, Sr.  
 Jon A. Theobald  
 Kathleen Thompson  
 Travelers Foundation  
 Tom Turba  
 Mary Ann & David  
     Wark  
 Teresa Wells  
 David L. Wettergren  
 Dawne Brown White  
 Emily White  
 Steven J. & Terri  
     Wilcox  
 Roland Wilsey  
 Hal Yocum  
 Kent York  
 Richard H. Zehring  
 Kurt & Diane Zilley  
 Jim Zimmer

**\$1-\$99**

Anonymous  
 Luke Adamsky  
 Loren R. Albert  
 Thomas H. Alt, MD  
 Marcia Anderson  
 Paul & Mary Anderson

Eugene R. Andreotti  
 Ama Anika  
 Dennis & Rhonda  
     Arason  
 Timothy & Anne  
     Arimond  
 Pamela J. Axberg  
 Kevin Balfanz  
 Charles S. Barklind  
 Tammy Barnaby  
 Timothy G. Barrett  
 Carl Baumeister  
 Tom Beikler  
 Mike Bergthold  
 Gurtie & Stanley  
     Berkner  
 Ann Berry  
 James & Lori Bertrand  
 Heather & Markus  
     Bieber  
 Jerome V. Biedny II  
 John Bina  
 David Booms  
 Fred Boulay  
 David S. Bouschor  
 Boy Scout Troop 111  
 Boy Scout Troop/  
     Cub Pack 228  
 Boy Scout Troop 461  
 Boy Scout Troop 817  
 Boy Scout Troop 9132  
 Risa G. Brandon  
 Douglas J. Bruce  
 Joan Orchard & Mark  
     Buckrey

Brian B. Bullock  
 Gene Carlson  
 Bruce & Ona Cary  
 Jon C. Cieslak  
 Chris Clausen  
 Sam Clausen  
 Barrett Connolly  
 Cub Pack 249  
 Kathy & Ronald Curry  
 Dale Dawson  
 Patrick Dee  
 Margaret Dexter  
 Jerome A. Doherty  
 Rich Dohrmann  
 Thomas & Mona  
     Dougherty  
 Jamie N. Dunn  
 Ralph Ebbott  
 Elizabeth Ecker  
 Russ Edhlund  
 Brian Ehret  
 Roberta Elliot  
 Donald Engle  
 David & Cindy Epland  
 Katherine J. Epler  
 Paul Erickson  
 Chad K. Flentje  
 Carol & Jim Forrest  
 Karen Foster  
 Jerry Friedmann  
 Robert Frits  
 James G. Frost  
 Brandon Fryar  
 GE Foundation  
 Doree Gamble\*



James Garey  
 Don Garvey  
 Mavis Gerick  
 Girl Scout Troop  
 52527  
 Mary Glenski  
 Edward Goff  
 Edward & Eileen  
 Gordon  
 Pamela A. Grayson  
 Brent Griffith  
 Richard Gunderson  
 Debra Guthmann-  
 Ternus  
 C. R. Hackworthy  
 Clarice Hagen  
 David C. Hansen  
 Dr. Linda Hanson  
 John Harrington  
 Mary Haupt  
 Charles A. Hearn, Jr.  
 Arthur Hedstrom  
 Merlin Helgemoe  
 Joan S. Henry  
 Michael Herrmann  
 Pam Hildebrandt  
 Fred Hirsekorn  
 Pat Hobbs  
 Thomas Holt  
 Allen E. Hoppe  
 Anna Hudak  
 Charles Huntley  
 Victoria Huntley  
 Christina Hursh  
 C. William Ireland  
 Nicole Delfino Jansen  
 Myron & Catherine  
 Jacobson  
 Brad & Susan Johnson  
 Carter & Amy Johnson  
 Gary M. Johnson  
 Laurie Jo Johnson  
 Monte Johnson  
 Phil J. Johnson  
 Betty & Paul Joyce  
 Linda B. Keene  
 John F. Kemper  
 Charles Kenow  
 Jody Kimball  
 James R. King  
 John D. King

Melissa Kissling  
 Kirk Kleckner  
 Karen A. Klose  
 Steven M. Krech  
 Wesley J. Laseski  
 Todd S. Levig  
 Al Linder  
 Steve Linder  
 Jackie Maas  
 Jerome & Joan  
 Mandel  
 Donald Marose  
 Donald J. McCall  
 Clayton L. McGinley  
 Weston McGinley  
 Loren Meinke  
 Michael S. Meyers  
 Calvin H. Miner  
 Jean Moberg  
 Jeff Moe  
 Betsy Moore  
 Dave Moore  
 Roberta Jean Moore  
 Susan Mueller  
 Roy P. Nauertz, Jr.  
 Mark Nelson  
 Rodney Nelson  
 Peter Nelton  
 Jack E. Nessen  
 Roger H. Nielsen  
 Deborah Nimis-  
 Rohloff  
 D. Eugene Nugent  
 Delmer Okeson  
 Gerald E. Oss  
 Kathryn Otto  
 Raghunath Padiyath  
 Steve Panning  
 Shirley Pearl  
 Robert & Carol Pettitt  
 William Phillips  
 Julian G. Plante, PhD  
 Deb Pleasants  
 Roxanne Rask  
 James Reagan  
 Sharon J. Reece  
 Kenneth C. Reed  
 Brian & Cheryl Reiners  
 Victoria A. Reinhardt  
 Dr. Franz-Josef E.  
 Reisdorf

Joan L. Robbins  
 Chad Roberts  
 Karen Rogers  
 Mike & Ruth Rolfs  
 Cynthia L. Rosch  
 Tom Rush & Nora  
 Whiteman  
 Cheryl Russell  
 William E. Rust  
 Chris & Carolyn  
 Sandberg  
 Renee & James Sass  
 Grover Sayre  
 Helen M. Schadegg  
 Tim & Lee Ann  
 Schlarman  
 Barbara L. Schmidt  
 Catherine A. Schreifels  
 Kevin & Liz  
 Schwarzbauer  
 William L. Seabloom  
 Craig Sheaffer  
 Ames Sheldon  
 Bernard M. Sherman  
 Joe Showalter  
 Elaine M. Sinn  
 Keith & Constance  
 Smeby  
 Dr. Richard E. Smith  
 Mary Kay Sobcinski  
 Mollie Spillman  
 William L. Sulzbach  
 Barbara Swalinkavich  
 Doug Swanson  
 Patricia & Richard  
 Swanson  
 Wyatt Swanson  
 Priscilla Swartz  
 Tim Tatarek  
 Aaron M. Tenner  
 Brad L. Thompson  
 Caroline Thompson  
 Renee Thompson  
 Roberta Thompson  
 Ruthanne Twohig  
 William R. Tysseling\*  
 Kathryne La Valley  
 David & Monica Walsh  
 Kristie & Chuck  
 Wanstrom

JoAnne Wetherell-Moriarty &  
 John Moriarty  
 Lisa M. Weyrauch  
 Ted Whitney  
 Peter Wickert  
 Debbie Wickham  
 Debra C. Wilkinson  
 Phyllis Willerscheidt  
 Christopher Williams  
 John & Cleo Young  
 Ronald & Shirley Zimmerman

\* Deceased

### ***Gifts-in-Kind***

***\$10,000+***

3M

Northern Star Council,  
 Boy Scouts of  
 America

***\$1,000-\$4,999***

Sandra and Donald  
 Craighead  
 Marco

***\$500-\$999***

Ron and Betty Phillippo

***\$100-\$499***

Hugh Gwin  
 Claudia Nicholson  
 Thomas Welna

***\$1-\$99***

Terri L. Anderson  
 Maxine Davis



## Statement of Financial Position

December 31, 2013 (With Comparative Totals for 2012)

	<b>Total 2013</b>	<b>Total 2012</b>
<b>Assets</b>		
Cash	\$10,204	\$500
Contributions Receivable	\$3,537	\$14,062
Investments	\$258,878	\$236,789
Due (to) from Funds	\$0	\$0
Prepaid Expenses	\$0	\$0
Inventory	\$985	\$1,040
Land, Building, and Equipment, Net of Depreciation	\$656,209	\$593,788
Equipment, Net Depreciation	\$0	\$4,703
<b>TOTAL</b>	<b>\$929,813</b>	<b>\$850,882</b>
<b>Liabilities and Net Assets</b>		
Accounts Payable & Accrued Expenses	\$23,377	\$7,509
Deferred Revenue	\$0	\$0
Short-Term Loan	\$0	\$0
Accrued Interest	\$0	\$0
Contract for Deed	\$0	\$0
Total Liabilities	\$23,377	\$7,509
Net Assets:		
Unrestricted	\$897,227	\$829,032
Temporarily Restricted	\$9,159	\$14,341
Total Net Assets	\$906,386	\$843,373
<b>TOTAL</b>	<b>\$929,813</b>	<b>\$850,882</b>

## Statement of Activities and Changes in Net Assets

December 31, 2013 (With Comparative Totals for 2012)

	Total 2013	Total 2012	
<b>Support and Revenue</b>	Individual Donations and Grants (including Journey Campaign)	\$241,219	\$99,607
	In-Kind Contributions	\$65,640	\$39,882
	Membership Dues	\$17,334	\$10,575
	Shop Sales Net of Cost of Sales of \$74 and \$182 in 2009 & 2008 Respectively	\$686	-\$924
	Other Income	\$10,679	\$8,260
	Interest and Dividends	\$6,902	\$2,182
	Realized Loss on Investments	-\$442	\$24,876
	Unrealized Loss on Investments	\$62,248	\$3,287
	Net Assets Released from Program Restrictions	\$0	\$0
	<b>Total Support and Revenue</b>	<b>\$404,266</b>	<b>\$187,745</b>
<b>Expenses and Net Assets</b>	Program Services	\$164,910	\$97,923
	Management and General	\$134,023	\$38,038
	Fund Raising	\$42,270	\$48,140
	<b>Total Expenses</b>	<b>\$341,203</b>	<b>\$184,101</b>
	<b>Change in Net Assets</b>	<b>\$63,063</b>	<b>\$3,644</b>
	Net Assets at Beginning of Year	\$843,373	\$839,729
	Net Assets at End of Year	\$906,436	\$843,373



## NORTH STAR MUSEUM OF BOY SCOUTING AND GIRL SCOUTING

2640 E. Seventh Avenue  
North St. Paul, MN 55109

651.748.2880 ph

[www.nssm.org](http://www.nssm.org)

Written by Stephanie Weiger  
Editorial team: Terri Anderson, Shirley De la Torre, Claudia Nicholson

North Star Scouting Memorabilia Inc. is a Minnesota non-profit corporation, a member of the American Association of Museums, Association of Midwest Museums, and the Association of Scout Museums International. We are a 501(c)(3) with the mission to collect, preserve, share and interpret the history and significance of Boy Scouting and Girl Scouting in the upper Midwest. We adhere to the Code of Ethics of the American Association of Museums and the Donor Bill of Rights.

© 2014 North Star Scouting Memorabilia Inc.